

# DESIGN SENSE

ACE UPDATE

DESIGN WHICH MATTERS!

COMPLIMENTARY WITH ACE UPDATE

## Also read:

- >>> A sense of timelessness
- >>> Tête-à-tête with light designer Arjun Rath
- >>> The Blooming Casa: Setting New Norms for Residential Interiors

## ESCAPE FROM THE CITY

*Under the Mango Tree, a farmhouse designed by Studio NishitaKamdar is a perfect getaway for its occupants seeking to soak in the quaint and serene surroundings of a rural landscape.*



# Innovative Institutional Furniture Solution from **bonton**

## Classroom Furniture



DUAL DESK



Design patent No. 254930

## Lab Furniture



Institutional Furniture, which are specifically designed for classrooms, Libraries and Laboratories etc. are most unique, and one of its kind in the country. They are modular in nature; hence, can be installed as per varied customised requirements. These furniture are synchronised in design and high in aesthetics. Its vibrant and distinguished colours impart a bright impact on the environment of the establishments.

## Library Furniture



## Pre-Primary Furniture



**bonton** manufactures Wooden & Steel Modular Institutional /Office furniture comprising :

- Office Tables ■ Chairs ■ Partitions ■ Storage Systems

**bonton**  
FURNITURE SOLUTIONS  
*for those who believe in quality!*

BONTON TECHNOMAKE PVT. LTD.  
7-A, Scheme No. 71, Near Chandan Nagar Police Station, Dhar Road, INDORE - 452 002  
Tel. : 0091-731-2383157 Mob. : +91 98265 77335, +91 98260 43738  
E-mail : [info@bontonfurniture.net](mailto:info@bontonfurniture.net), Website : [www.bontonfurniture.net](http://www.bontonfurniture.net)

Bonton Products Available At



**Channel Partners :** Ahmedabad, Bangalore, Bhopal, Bhubaneswar, Chennai, Coimbatore, Gwalior, Hyderabad, Indore, Jabalpur, Kolkata, Mumbai, Nagpur, New Delhi, Palanpur (Gujarat), Patna, Pune, Raipur, Vizag, Wardha, Yavatmal.

For Dealership Enquiry : Amit Dubey - 98260 38315, Vinod Bapna : 98260 62313  
Toll Free No. 1800 599 2251

**Dealer's Enquiry Solicited**

# SOURCES UNLIMITED UNVEILS THE TUBER COLLECTION OF PLANTERS BY INDIGENUS

*Designed by Haldane Martin, the Tuber Collection is an eye-catching range of planters.*



As its name implies, the Tuber sits as if it is rooted in the ground. Its solid bearing means it can be interspersed randomly, bunched as a large centerpiece or grouped in large numbers to create exciting journeys through a vast space. The Tuber would be particularly suitable when creating an indoor forest installation. The Tuber Collection is also available in stone.

*For more information, visit:  
[www.sourcesunlimited.co.in](http://www.sourcesunlimited.co.in)*

Sources Unlimited, one of the pioneers in introducing high-end international furniture, accessories and lighting solutions in the Indian market, has unveiled an exquisite range of planters by Indigenus. Indigenus designs and manufactures beautiful, durable architectural planters developed to uplift and enhance residential, hospitality and corporate environments.

Designed by Haldane Martin, the Tuber Collection is an eye-catching range of planters. Created to last generations and weather with character, the mighty Tuber is crafted from African Iroko, a hard timber often used for boatbuilding,

flooring and outdoor furniture. The Tuber's enduring strength is derived from individual cut pieces of wood bolted together internally with stainless steel pins and hand assembled into a pleasing bulbous form.





## 03 Sources unlimited unveils the tuber collection of planters by indigenus

Designed by Haldane Martin, the Tuber Collection is an eye-catching range of planters.

## 06 A sense of timelessness

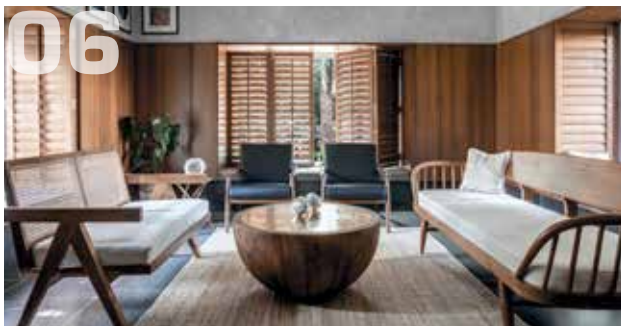
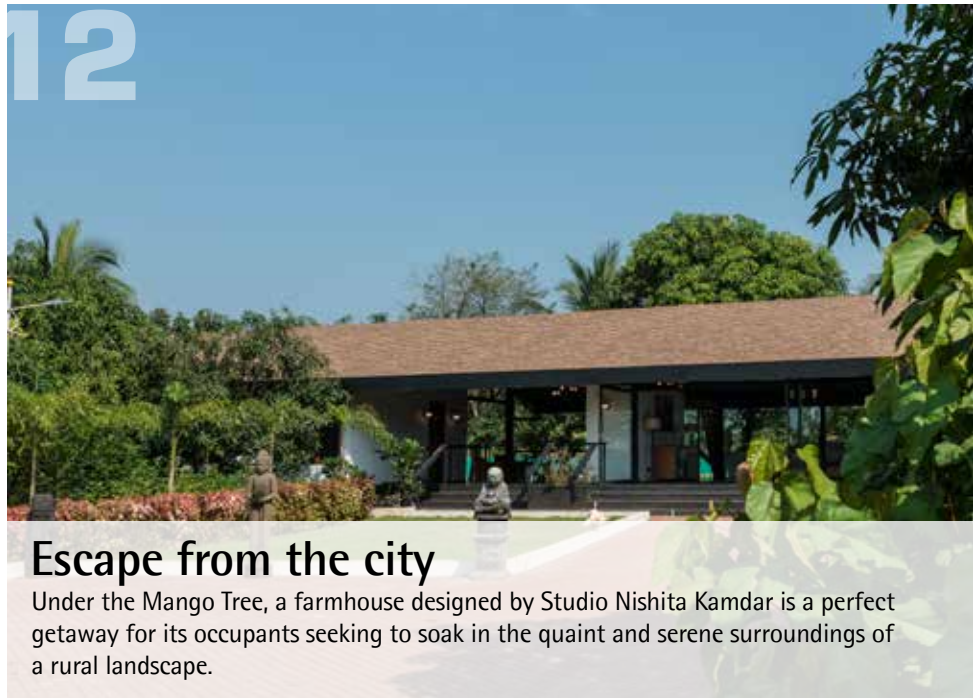
Th T-house design adapts to the variation in function and scale of the different spaces within the project to reflect a sense of timelessness.

## 18 Our Products Will Be Retailing In Singapore From September 2021

A tête-à-tête with designer Arjun Rathi on selecting the right lights, his new studio in Mumbai and his plans to export his truly 'Made in India' products to Europe and other overseas markets.

## 24 The Blooming Casa: Setting New Norms for Residential Interiors

Designed by 'The KariGhars' the residence is infused with colours and an eclectic mix of Indian traditional and modern contemporary design styles to connote a design narrative which is unique and exciting.



Cover Credit: Maheswar Gauda

### ASSOCIATE EDITOR\*

Vikas Bhadra  
 editor@acedesignsense.com

### ADVERTISING

Poonam Poptani (+91-9322846745)  
 ads@acedesignsense.com

### SUBSCRIPTION

Poonam Poptani (+91-9322846745)  
 itm.subscribe@gmail.com

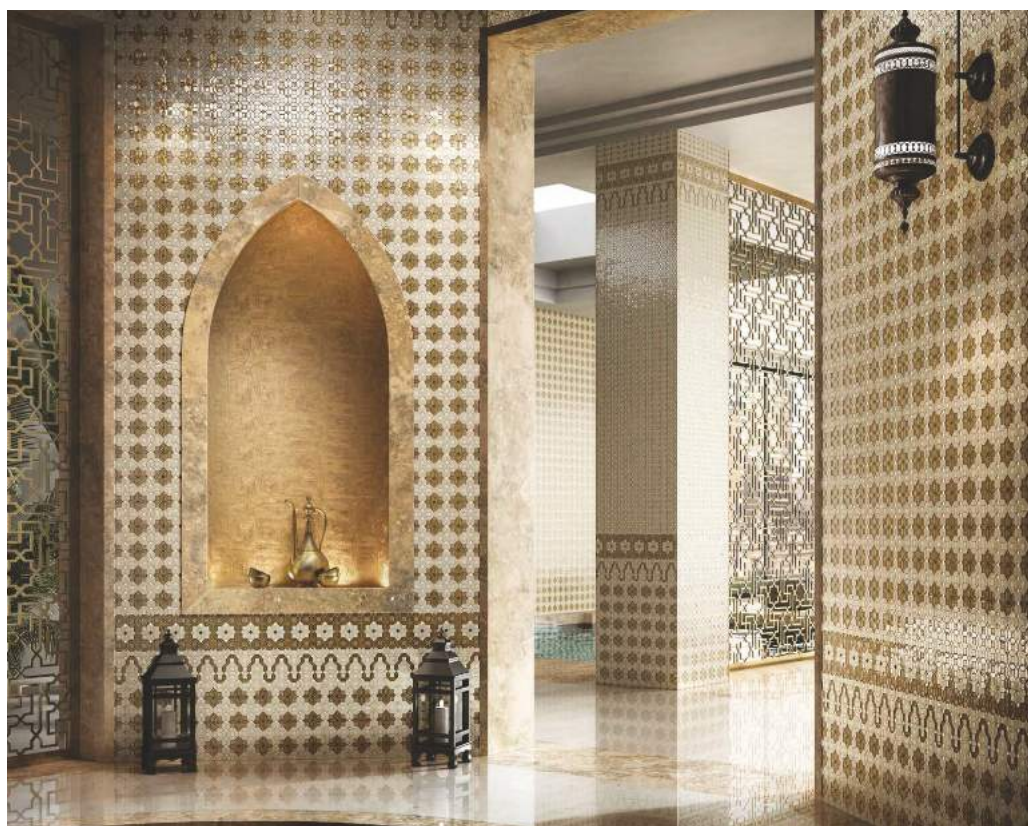
Printed and published by Mr Prasad Kumar Nair on behalf of I-Tech Media Pvt Ltd and printed at Anitha Art Printers, 29, Oasis Industrial Estate, Santacruz East, Mumbai-400055 and published at I-Tech Media Pvt Ltd, 604, Surya House, Road No 7, Vidyavihar East, Mumbai - 400077. Editor: Mr. Prasad Kumar Nair.

All rights reserved. While all efforts are made to ensure that the information published is correct, ACE Update holds no responsibility for any unlikely errors that might occur. The information on products and services / technology on offer is being provided for the reference of readers. However, readers are cautioned to make inquiries and take their decisions on purchase or investment after consulting experts on the subject. ACE Update holds no responsibility for any decision taken by readers on the basis of information provided herein. Tel.: +91-22-25018601, / +91-9821667357



# SICIS LAUNCHES ITS CRYSTAL COLLECTION IN INDIA

*The Crystal Collection enables creating totally new decoration solutions, for customizable indoor and outdoor projects.*



mosaic tesserae in vitreous paste, in 1.5 x 1.5 cm and 1 x 1 cm format. Sicis is projected towards an evolving world, where every surface is the protagonist of a space and each element affects its beauty. 🏠

**R**enowned worldwide for its exquisite mosaic creations that epitomize superior craftsmanship, design and technology, Sicis has launched its Crystal Collection in India—available through Tessera India.

In every collection the focus remains the same: choose, invent and develop unique and exclusive materials that can go beyond the functionality of the product and play with the elegance of the style, expressing a new and experimental vision of the world of covering spaces. The collection has, as its point of

arrival, the refinement of the product enhanced through the material: a special shape in color paste or back-painted.

The Crystal Collection enables creating totally new decoration solutions, for customizable indoor and outdoor projects. From the arabesque designs for the surfaces of a dream hammam to the multicolored motifs of a refined penthouse, it ranges from the most modern patterns and classic 'tone on tone' to monochrome elegance.

The sides of the Crystal tiles have been created to allow its combination with other Sicis

For more information, visit: [www.tesseraindia.com](http://www.tesseraindia.com)





## A SENSE OF TIMELESSNESS

*The T-house design adapts to the variation in function and scale of the different spaces within the project, to reflect a sense of timelessness.*



Photo Courtesy: Fabien Charuau







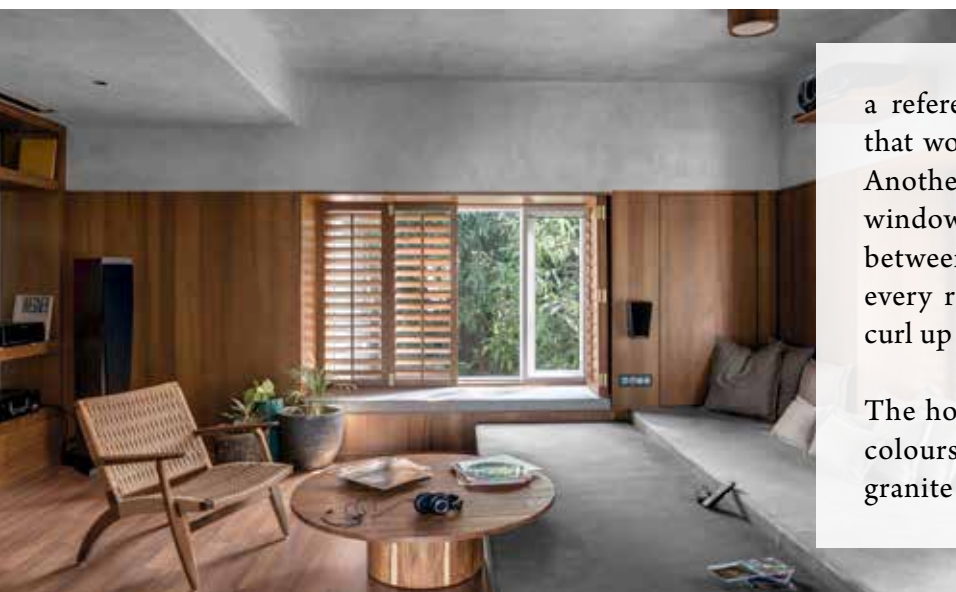
“The relationship between client and architect is extremely fundamental, as this is a highly tailor-made home to reflect the client’s comfort, lifestyle and personality,” says Kalpak Shah, Principal Architect, Studio Course referring to one of his projects, The T-house. Located in Surat the project is a contemporary take on mid-century modern architecture.

“The plot,” continues Kalpak, “sits within a community of 15 other bungalows, which had to abide to the builder’s common plans, facade planning, finishing treatment and appearance. Due to these constraints, the internal spaces and planning became our way to experiment with the design of this house.”





The residence which accommodates three bedrooms, apart from the living room, kitchen and family room is planned in such a way that the circulation core and passages are in the center, with all the living spaces around it. This opened up the entire house to the outdoors bringing in a lot of light and natural ventilation in each room. In essence, the underlying ideology gratified the client brief which made



a reference to the mid-century modern homes, that would withstand time rather than be trendy. Another highlight in the interiors are the bay windows which ensures a seamless connectivity between the inside and the outside. A nook in every room allows its occupants to snuggle and curl up while watching the world go by.

The home designed for a family of three utilises colours that are inspired from nature, with black granite floors and hand painted walls in grey that





display the tactility of the process. The skirting rises a few inches higher than the general norm and gives solidity to the space. The design maintains a coherence throughout imparting a certain degree of individuality in certain spaces. In the toilet, for example the walls become white with lighter grey Kota flooring to respect the smaller volume. This was possible since the design adapts to the variation in function and scale of the different spaces enclosed in this house.

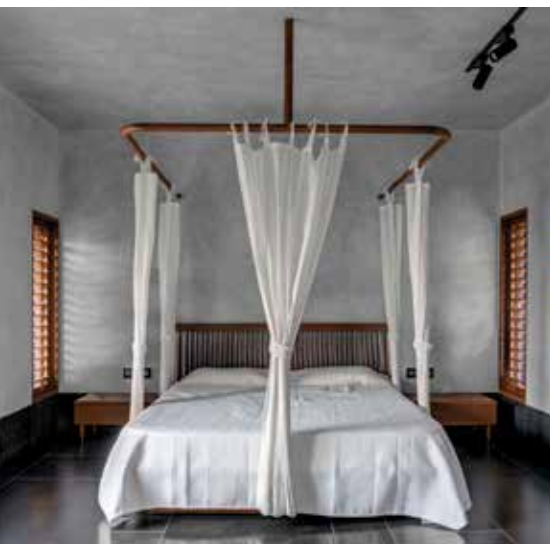


“The design intent and the course that our studio tries to unfold is of a coherent design, over the path of contemporary architecture. Simplistic, minimal design with careful selection of sustainable materials and precise details with local craftsmanship is extremely central to our philosophy,” says Kalpak and this is very evident in this project too. Wood is one of the key elements utilized in this project to bring the interiors to life. The material tends to add a charm of its own in a contemporary backdrop.





Most of the house furniture, partitions, handles, latches, etc utilized in the project were custom designed by Studio Course using sustainable materials such as natural brass, teak wood, fluted glass, woven rattan and Danish cord wicker work. 'Hans Wegner', 'George Nakashima' and 'Pierre Jeanneret' chairs were handpicked and altered to meet the design language and suit Indian anthropometry.







The T-house receives an abundance of natural light. At night, track lights in each room, with accentuating table and floor lamps keeps it well-lit.

In designing the T-House Kalpak Shah and his team strived to design a space which is not only timeless but also reflects a sense of calmness and serenity, and all the design interventions undertaken have succeeded in achieving the desired result.





## ESCAPE FROM THE CITY

*Under the Mango Tree, a farmhouse designed by Studio Nishita Kamdar is a perfect getaway for its occupants seeking to soak in the quaint and serene surroundings of a rural landscape.*



Photo Courtesy: PHX India





**F**armhouse are quite a trend these days. For urbanities who want a weekend escape or perhaps intermittent escapes it is a great way to do so. Like regular projects these too allow an architect to display a caricature of their creative sensibilities, more so, because it has to be designed for clients who are distinctively used to an urban way of life.

One of the recent additions in the glorious league of farmhouses is 'Under the Mango Tree' designed by Studio Nishita Kamdar. The farmhouse located in Karjat offer its users unobstructed views of the sprawling farm from any location in the house. The site is located between an agricultural land in the midst of Karjat. Towards one side is the main highway and towards the other edge the plot is bounded by other private plots.

For Nishita Kamdar, Principal Architect, Studio Nishita Kamdar, this project was an exciting assignment "Having studied architecture," she says "this was our very first tryst with a conventional architecture project. Imagining an entire project come to life wherein your ideas and





concepts ultimately were converted into a built form is like watching your thoughts coming to life. It's a very gratifying experience at a professional and personal level."

Spread across 5500 sq ft 'Under the Mango Tree' was brought to life in a year. The space has three distinct zones: living, verandah and rooms all connected via open plinths and extended spaces that help one to freely move from one space to another, blurring the idea of a wall. The entire 5500sq ft plinth is covered in a leather finished granite stone. Inlays in Grey stone or a handmade cement tile provides necessary relief and help



define functions on the floor plate. The continuation of one material as flooring gives an illusion of a large floorplate. The plinth is extended beyond the wall line to flow and connect to other spaces. To maximize the visibility from one end to the other, solid walls have been replaced with large mild steel framed glass doors which pivot 90 degrees to open up completely and expose the columns. One can seamlessly view from the east end all the way to the other end of the house.

The roof too is one of the highlights in this project, it consists of steel rafters supported on waif thin steel columns. The infill between the steel rafters is naturally polished seasoned old teak wood batons





which is layered with a bitumen layer, an insulation layer and finally a shingle layer. Elucidating on the roof and the other materials utilized in this project, Nishita says “We have done several residential interior projects, where we design within a shell given to us here, we designed the shell itself, so we could literally curate every experience inside. The roof is an elaborate system of both structure, aesthetics and climatic response. We have used an XPS foam inside which acts as an insulation layer and reduces the temperature inside the house by almost 5 degrees, thus making it very pleasant even in the summers. Likewise, the use of wood, and reclaimed wood pieces for the wood and door creates a sense of warmth in the space, natural Indian stones for the flooring make the flooring cool to walk on.”



For this project Studio Nishita Kamdar was also responsible for designing some of the interior accessories “Some of the furniture has been designed by us on site,” says Nishita “Especially the 4-poster bed in the daughter’s room. I think it is because we wanted the clients to experience an orchestrated lifestyle built on their fantasies -the idea of drawing open the curtains of your 4-poster bed, which overlooks the sprawling farm through full length windows, and watching your cows graze, the sun set while you sip on your hot chai makes for a picturesque scene.





Because of the use of large glass doors, and completely open spaces the farmhouse doesn't need to use artificial light and ventilation till almost 7 pm. This helps them cut cost of consumption of electricity to a great extent. At night, the property is illuminated by cane hanging lights in the living room which also make for great accent pieces. Floor lamps, table lamps on side tables and corners give a soft glow to the space.

In designing this project Nishita believes she was also able to implement the core tenets of sustainability "We strongly believe in creating







architecture for the senses and not just the aesthetics. I feel one needs to get smarter, bolder and more conscious about what we leave back on this earth, being an architect gives you the opportunity to be responsible for and responsive to the environment. Hence our top priority while designing is functionality, sustainability and longevity. Sustainability consists of three key elements, society, economy and environment. the idea of sustainability is skewed according to us and the word tends to be used very loosely. Sustainability for us is a self-sustaining practice, where you consume what you use and completely reduce wastage, and in that sense too I am happy to say that this building among other things completely reduces use of artificial energy besides which the waste wood is used to clad doors and make a pattern on it.”

As long as 'Under the Mango Tree' remains, it will continue to epitomize a symbiosis. A symbiosis wherein the client needs, as also, the architects idea of good architecture and design, both were fulfilled.





## OUR PRODUCTS WILL BE RETAILING IN SINGAPORE FROM SEPTEMBER 2021

*A tête-à-tête with designer Arjun Rathí on selecting the right lights, his new studio in Mumbai and his plans to export his truly 'Made in India' products to Europe and other overseas markets.*



**Arjun Rathí,**  
*Principle Architect and Designer,  
Arjun Rathí Design*



*Gnatra Residence - Interiors by Essajees Atelier*





Shah Residence –  
Interiors by Chicago Studio



Gnatra Residence –  
Interiors by Essajees Atelier

**H**ow important is human centric lighting in our daily life? And how can it help us to remain more productive in the day-to-day basis?

Human centric lighting is something which lighting designers have always remained focused on, which elucidates on the principles and remarks that lighting is first functional, post which its ambient or decorative nature takes over. But with functional lighting, you have to plan lighting in different areas of your apartment or your office as per the requirements. If you are going to light up a kitchen, you need it to be functional as well because there's a lot of work happening. When you're lighting up a dining area, you want the ambience, but you also want equal lighting on your dining table surface. So, in that sense you have to maintain a convenient relationship between function and aesthetics in such scenarios.





*Gnatra Residence - Interiors by Essajees Atelier*



**We see that good lighting design takes into account the sensorial profile of its occupants. What are some of the other factors which matter?**

It's very important to understand the dimensions of the space because when you see your building apartments, most of them are relatively the same. But when you go for private houses that are being built in Tier II cities, every space is different. You have to understand the volume that you're going to illuminate. The next important thing to understand from the client's perspective is the colour of the light. In India, clients are very



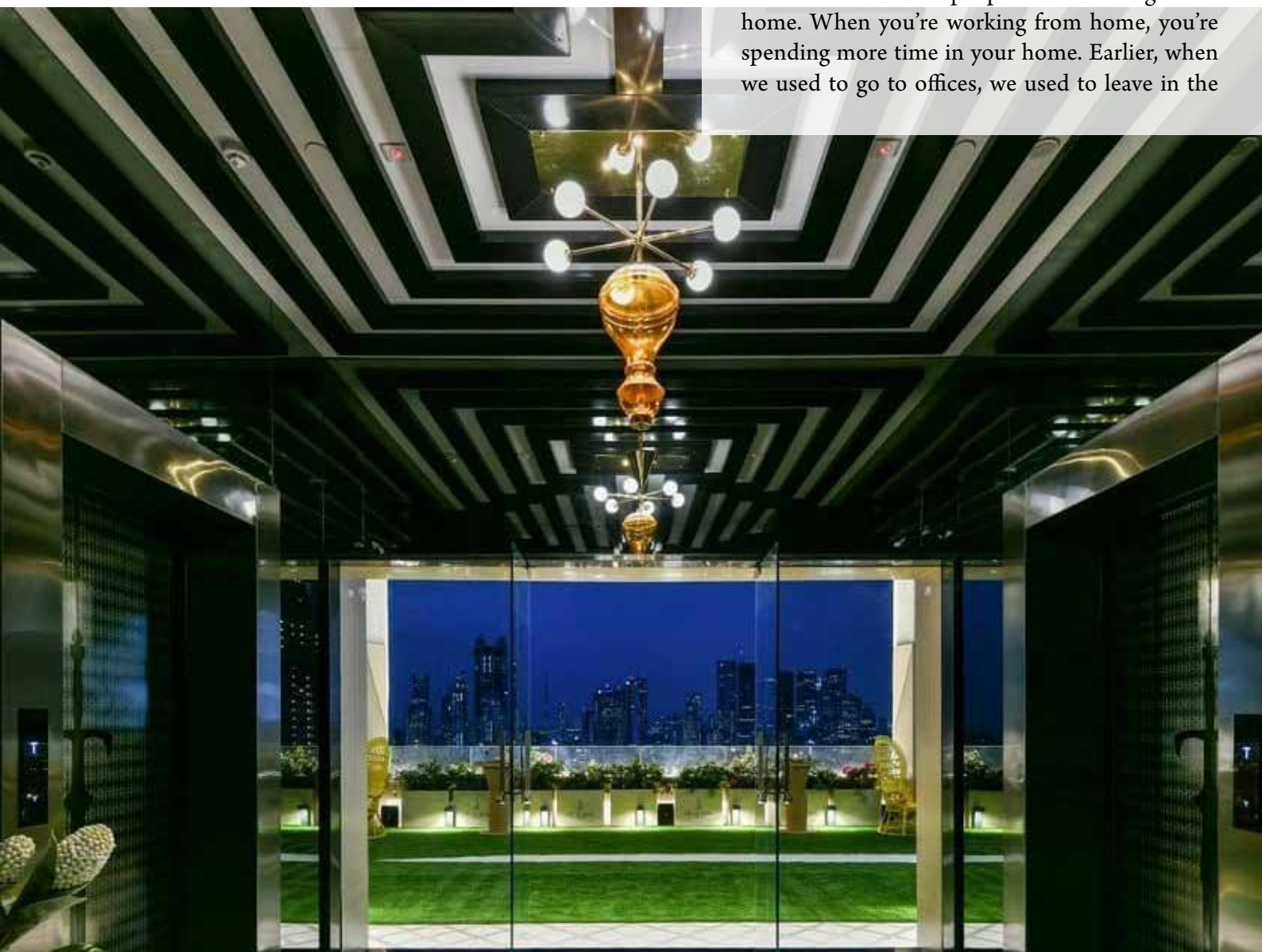




demanding, they're specific, like colour, there's a certain generation of clients who have grown up in tube lights and CFL era, they really like their white light, there are certain clients who like the yellow light. Understanding colour temperature is also important. There's this whole concept of circadian lighting, which has become very popular. Circadian lighting means that the lighting design is synced up to the human body's sleep cycles. In the evening, warmer tones, yellow tones are more calming to the mind and in the daytime, the more of white light activates the mind.

**For new home owners who wish to rev up their interiors but have limited knowledge of lights and lighting design, what would you like to say?**

The timings for which the residence is being used is of great importance to arrive at the right decision. A lot of people are working from home. When you're working from home, you're spending more time in your home. Earlier, when we used to go to offices, we used to leave in the



*The four feet version of the Shikhara Hanging Pendant customised for the terrace lift-lobby for a residential project*



morning and be back in the evening. More time was spent in the evenings at home, that's why ambient lighting and OLS gained a lot of importance. Now most people are creating separate work areas in their homes because of the work from home concept. In that sense, lighting has to be very well thought of. For your function, do you want it to be ambient or otherwise? A choice has to be made. It is best in the homeowner's interest to denote each room with a designated function as it will help him/her choose the right kind of lighting. One more thing for new homeowners to keep in mind is that you don't need to light up your full house else it starts to look like a retail store. You can just light up certain zones. If you like spending time in your living room, use some tanning lamps in your living room to create the accent right. Use spotlight for functional lighting, if you're doing something in your dining area, use a nice decorative fitting to give you the ambient lighting, so just try and identify the function and then react to it with the right kind of lighting as a response.



Shah Residence -  
Interiors by Chicago Studio



**You have opened a new studio in Chembur. Can you tell us more about it?**

Christened as 'The Rural Modern Glass Studio', the new studio takes inspiration from rural Indian culture. All the colours and textures from rural India converge and turn into modern objects and products. The studio will also allow us to offer glass accessories and glass objects; now we'll also be experimenting a lot with glass, a lot of our collaboration will be with glass artists, to see how we can produce different and unique shapes of glass, which are created by the artists which we will use with our lighting. There'll be a lot of collaboration happening with artists in the coming months to create very artistic forms of lighting.

We have also envisioned the studio as a space where designers can come with their concepts, and experiment with glass. We hope to give rise to a new generation of glass artists or designers who otherwise did not have access to glass.

'Freedom' vases, inspired by the 'Tiranga' (tricolour) national flag

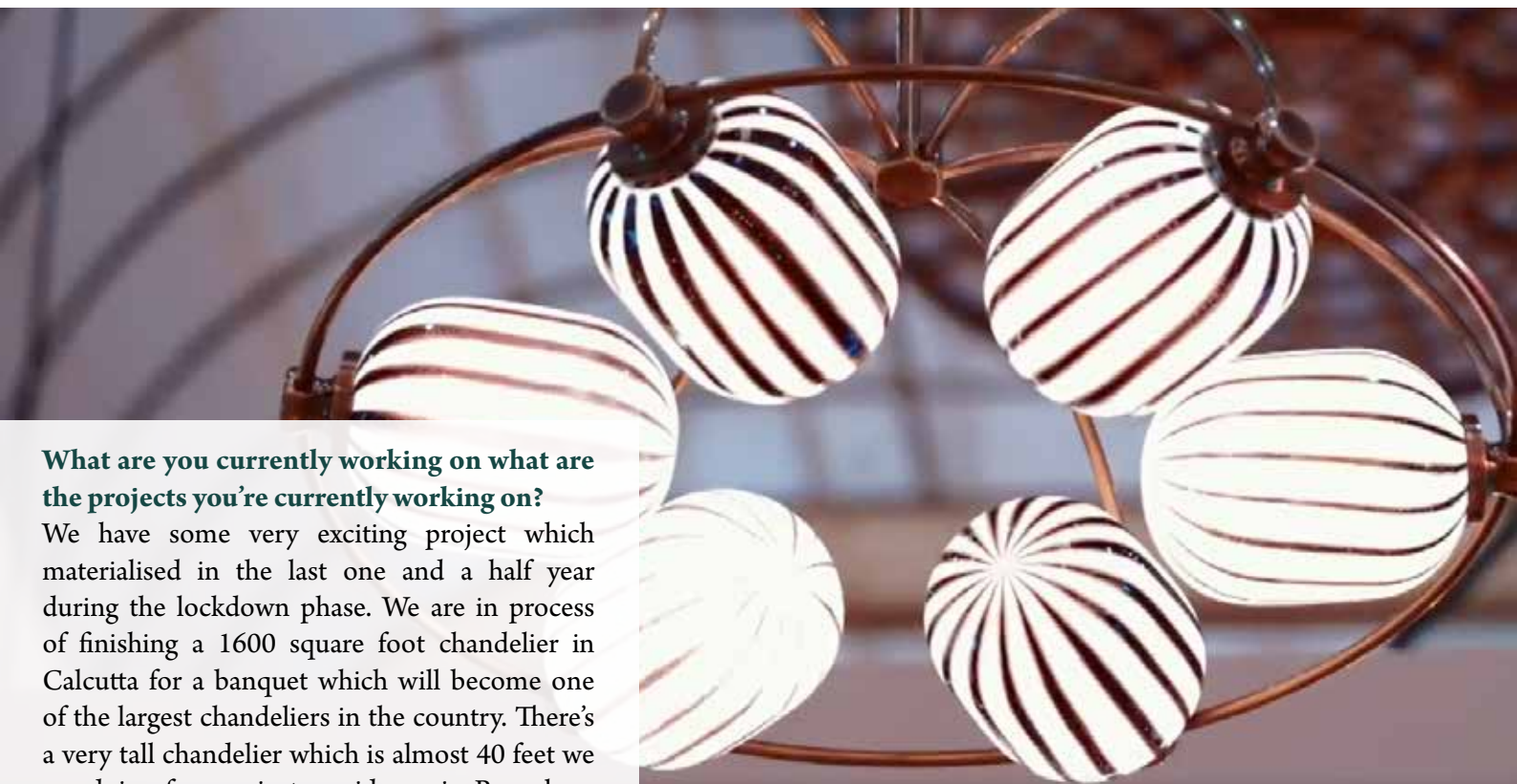




*The 'Shikara Collection' adorns the Papagiri Residence in Hyderabad*

### **Are you planning to make lighting products available beyond the borders?**

Yes, right before last year's pandemic, in March, we were about to retail our products in a store in London. We are still in process of setting that up. In between the lockdown we have signed a contract with a store in Singapore. So, September 2021 onwards, our products will be retailing in Singapore. We are also in talks with a US company. Hopefully in a couple of months our products will be retailing in the USA as well. We are already retailing out of all the metro cities Bombay, Calcutta, Delhi, Bangalore to various retailers and we are already available on a lot of online platforms as well. We've been really geared up in the last one year and plan to export out products to Europe and other overseas markets.



### **What are you currently working on what are the projects you're currently working on?**

We have some very exciting project which materialised in the last one and a half year during the lockdown phase. We are in process of finishing a 1600 square foot chandelier in Calcutta for a banquet which will become one of the largest chandeliers in the country. There's a very tall chandelier which is almost 40 feet we are doing for a private residence in Bangalore. Secondly, we've also launched a new lighting collection in February, inspired by Indian candy and desserts, called 'The Sugar Collection'. One of the most loved pieces in this collection is the striped Bullseye. Mimicking the popular mint candy, these were created by Czech glass blowers and come as table lamps and hanging lights. 🍰

*Striped Bullseye - Mimicking the popular mint candy*



# THE BLOOMING CASA: SETTING NEW NORMS FOR RESIDENTIAL INTERIORS

*Designed by 'The KariGhars' the residence is infused with colours and an eclectic mix of Indian traditional and modern contemporary design styles to connote a design narrative which is both unique and exciting.*

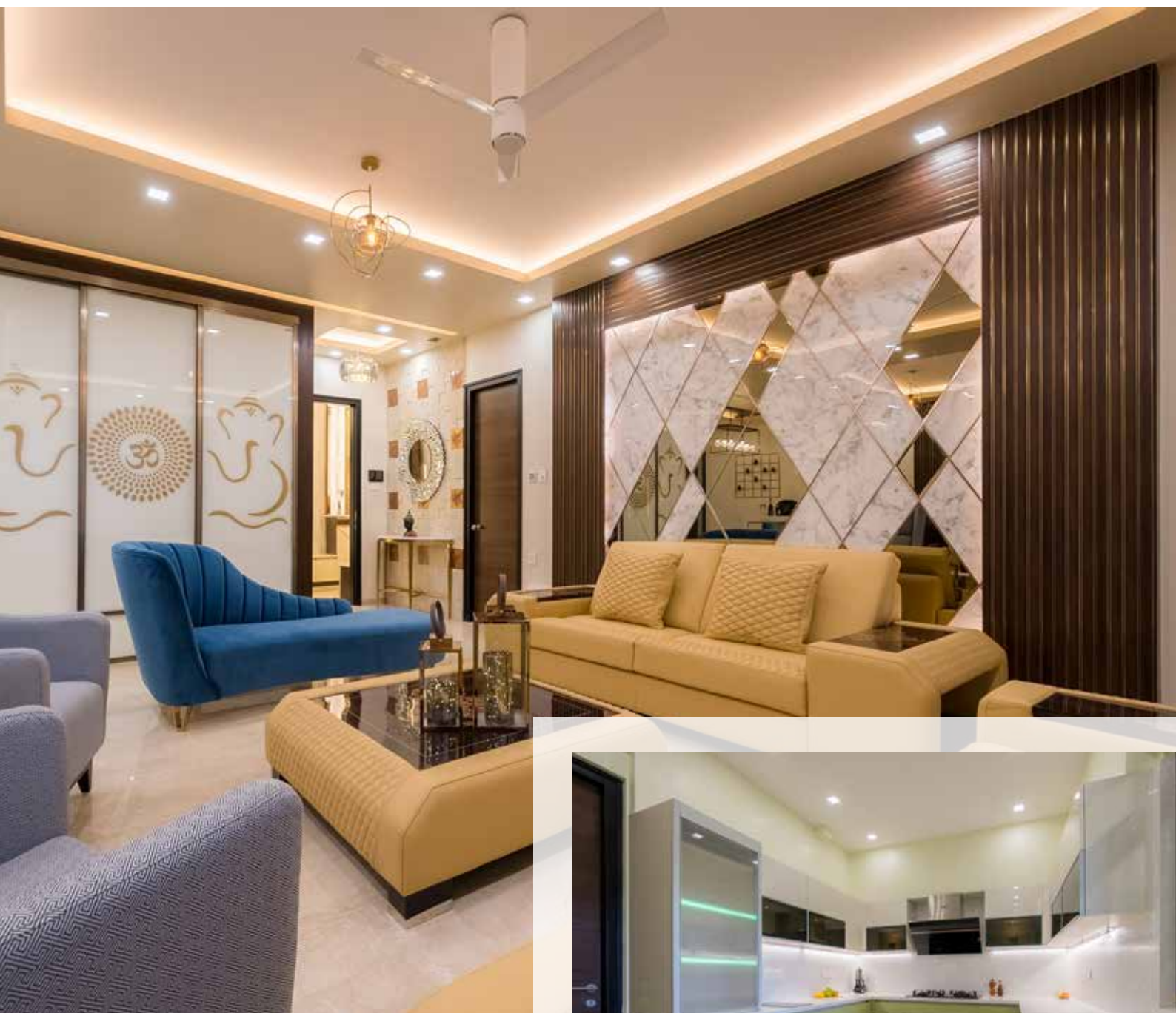


Photo Courtesy: The Dark Studio







**T**he flat in Peninsula Heights is a plush residence that allows colours, patterns, and textures to portray a bespoke design narrative. With bright hues and luminescent lighting, 'The Blooming Casa' defies all norms of residential interiors & paints a picture of sheer comfort in luxury. Built across 3500 sq. ft, the residence showcases a unique design style that seamlessly imbibes modern luxe with a strong cultural identity.

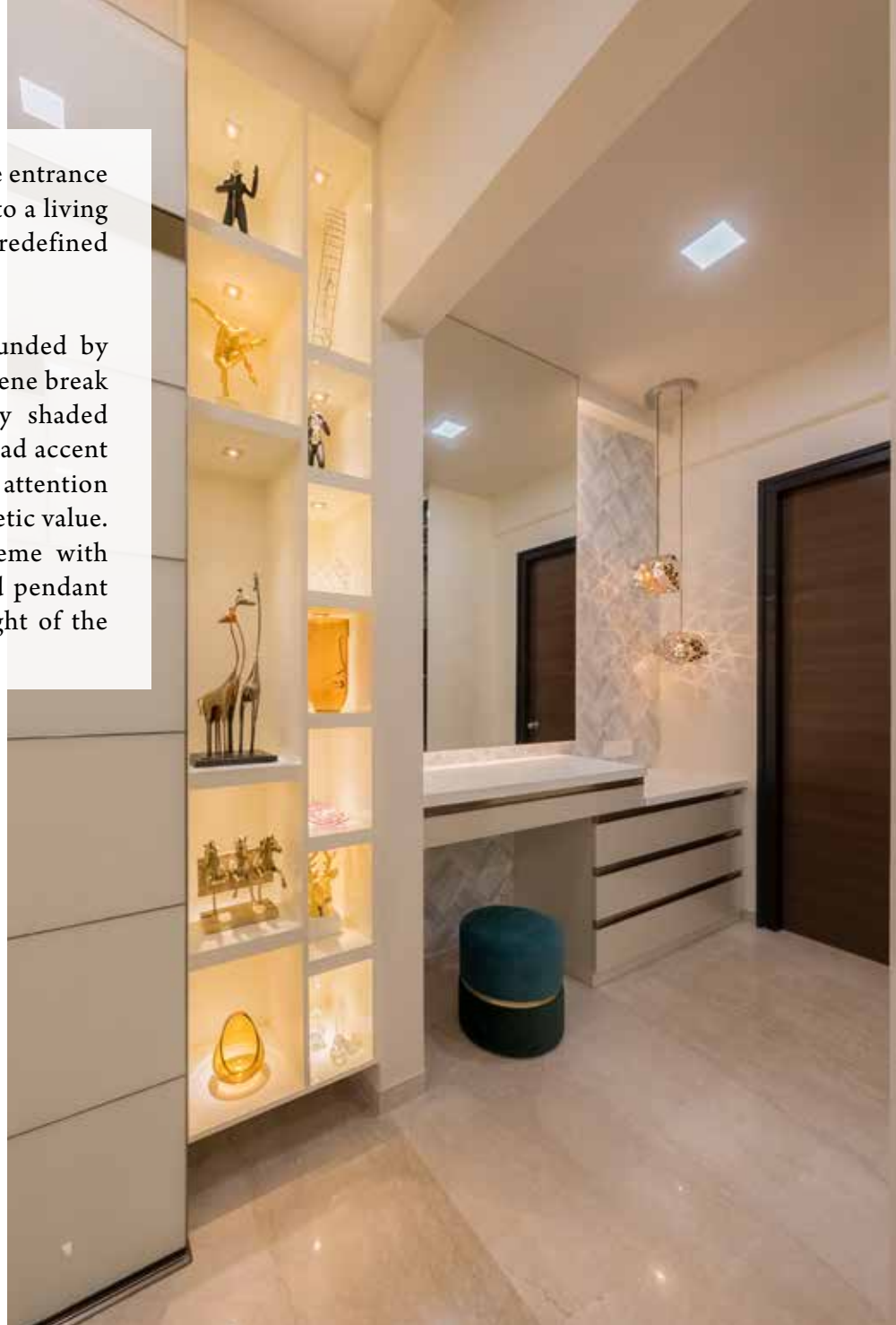
The client wanted the space to depict their traditional values while still being modern in its approach. The interiors are thus infused with colours and are an eclectic mix of Indian traditional and modern contemporary design styles, keeping in mind the user preference. Upon entering the house, one sees themselves embraced by a hall of lights. The ceiling lights and the metal artifacts on display gives one an experience of their own personal starry sky. The entrance is surrounded by dazzling marble-clad walls with metallic touches and tiled flooring that gives





the space its own refined depth. The entrance corridor eventually opens through to a living room that is in itself an example of redefined luxury.

As the client wanted to be surrounded by colours, the living room offers a serene break from the neutrals with differently shaded furniture upholstery. The marble-clad accent wall in metal inlay work takes the attention of the eye in creating a strong aesthetic value. The room follows a metallic scheme with various decor statement pieces and pendant lights on display. The main highlight of the living room is the mandir area.



Enclosed within a sliding glass door, the mandir offers a much-needed peaceful sanctuary to the users. The glass door has religious graphic work on it that ensures one sees the room for what it is. The mandir is made in white marble and encompassed in an all-white room maintaining the calm & serenity inside. The lush balcony attached to the living room offers the home a refreshing sight of the outdoors.

The balcony is planned to exude comfort with a swing on one side and coffee table seating on the other, all in brown wicker. The pop of colour is given in the form of differently shaded potted planters that further offers respite from





monotony to the user.

The dining hall is attached to the living room with a magnificent bar to its right. The area exhibits luxurious charm with the marble tabletop and royal seating along with a bronze display table behind with mirrors & decor statements exhibited on it.

The home bar captures the eye with its clean lines and resplendent lighting. There is a pendant lighting from the ceiling that holds a panel of Edison bulbs just above the bar table. The bar chairs in bright blue and bronze merge well with the all-white and metallic design of the area. The cabinet table behind the bar is



completely mirrored, reflecting the entire room and offering an illusion of a three-dimensional space. The kitchen is fully automated and includes a colour flux of pastel green and white. It is designed to exhibit architectural perfection with clean lines and soothing symmetries.

A corridor leading to the bedrooms showcases tasteful design planning. The haphazard order of circular ceiling light ambiently lights up the entire path while the walls are lined up with wall paintings & family memorabilia. The master bedroom defines timelessness.





One is welcomed inside and is instantly transported to a luxurious journey of comfort. There is a flawless use of lacquer glass on the TV cabinet that holds both storage space and a display area on it. The bed in green is flanked by the accented metallic wall on either side, further uplifted by hanging pendants. There is ample natural light and ventilation in the room owing to the floor-to-ceiling window design.

The room is filled with a soft lighting scheme, starting from the hanging pendants to the cove lighting, indulging the space in its grandeur. The dressing area and the bathroom are given



utmost attention keeping in line with the elegant theme of the room. The dressing table holds a huge mirror on the marble-clad wall & a soulful lighting pendant while a short corridor leading to the bathroom. The splendid bathroom oozes a relaxing aura in an earthy colour scheme and stunning lighting near the mirror.

A separate TV room with comfortable leather furniture is included in the house along with a home office in the corner. It flaunts exquisite cove lighting with a unique stone-accent wall that projects pleasing surroundings around. The yellow seating







strikes a contrast to the earthy hues and offers the room a colour pop. The guest bedroom is another charming delight bathed in shades of blue. From the blue-toned lacquer glass wardrobe to the curtains and throw pillows, the room fabricates pleasant harmony. The bed in cream has a marble-clad bed back wall bordered in metallic effects that offer a room a defining aspect. The cove lighting scheme gives the room a symmetrical balance and hence exudes ease to the user.

Moving further, the children's bedroom is all about vibrant energy and it is visible in each detail included in the design. From the space-themed sliding glass wardrobe door to the use of yellow on the wall and the study table along with the influx of blue on the bed and the curtains, each element highlights the lively spirit of the child. The lighting scheme on the ceiling too is a fresh break from the usual layout.

The nucleus of the room is in the open cabinet display behind the bed while the study table, like the TV cabinet,

has storage drawers in yellow and blue over a majorly white tabletop. The soothing colours in the room let the user feel more attached to the space showcasing their spirited personality. Every room of the house has been infused with varied textures and colours to keep from being monotonous. There is ample privacy given in each room, careful of its needs. Keeping in mind their traditional roots, creativity takes a cultural route where culture has been invoked in each corner along with a modern design approach.

There is a conscious use of recycled sustainable materials in the design. Energy efficiency is given prominence as well with the employment of LED lighting & a fully automated kitchen. With halo, cove, and accent lighting, the entire design of the house comes alive and blends with all the design elements.





**ACE Update** is a premier monthly providing the latest updates and analysis of industry viewpoints in architecture, construction and engineering with a fresh and current approach. Here you get the most comprehensive news and analysis on construction and infrastructure sectors. Since its inception in 2010, the magazine is providing platform to frontline architects, interior designers, developers & contractors, project vendors and their latest innovations on pre-construction, construction and post construction activities. The magazine covers an array of subjects like designs, modelling, construction project reviews, innovative building materials, green building, interior, fenestration, roofing, HVAC, lighting, energy management, resource management, sanitary ware aesthetics, structural audit, maintenance, waterproofing and rehabilitation, project financing, AI & building automation etc



Please Tick

☐ 1 Year (₹2,400) ☐ 2 Year (₹4,800) ☐ 3 Year (₹7,200)

### Subscriber Information

Name: \_\_\_\_\_ Designation: \_\_\_\_\_

Company: \_\_\_\_\_

Type of Activity: \_\_\_\_\_

Address: \_\_\_\_\_

City: \_\_\_\_\_ State: \_\_\_\_\_ Pin Code: \_\_\_\_\_

STD Code: \_\_\_\_\_ Phone: \_\_\_\_\_ Mob: \_\_\_\_\_

Email: \_\_\_\_\_ Website: \_\_\_\_\_

### Payment Of Subscription

Payment Details: Cheque / DD No: \_\_\_\_\_ Dated: \_\_\_\_\_ Drawn on: \_\_\_\_\_

For Rupees: \_\_\_\_\_ in favour of I-Tech Media Pvt. Ltd.

(Pls. add 25/- for non Mumbai chequee) For outside India, subscription charges in USD



604, 6th Floor, Surya House Station Road, Vidyavihar East,  
Mumbai - 400077, India Contact No: +91 932 650 7263  
Email: [subscribe@aceupdate.com](mailto:subscribe@aceupdate.com)  
Website: [www.aceupdate.com](http://www.aceupdate.com)





Fire resistance door



Office corridor door



Emergency exit door



Clean room door



Industrial steel door



Safety door



Entrance door ( RR )



Entrance door ( TS )



Entrance door ( VK )



Internal flush door



We are specialised in manufacturing steel residential , commercial and industrial door.  
We are also provide solutions for access control and electronic locks  
Our company is certified with ISO 9001:2015 and IS 3614-1992 Part 2 Fire Resistance Steel Doors.

**Channel Partner With DORMAKABA World Leading Hardware, Access Solution and system Solution providing company.**

**MERASHA SHAPERS PVT LTD**

Plot No. A-84, Five Star Kagal MIDC. Kolhapur. Contact: +91 8380871999, 7888004304  
www.merashagroup.com **Showroom:** 1328/45, Opp. Udyam Society Hall, Y. P. Powar Nagar, Kolhapur



# Flying high

## Tensile membrane structures at Airports



### Applications

- City side Pick & Drop canopy
- Airside canopy
- Car Parking & Walkway Covering etc

### Material properties

- Permanent structures
- Temporary structures
- Building Façades